



HARMONY  
TIMBER FLOORS



# HYDRO-STEP

SPC FLOORING

WATER RESISTANCE - DURABLE - TOUCH







## HYDRO-STEP SPC FLOOR

100% WATER PROOF





HARMONY  
TIMBER FLOORS

## LUXURY WITHOUT COMPROMISE

HARMONY HYDRO-STEP SPC FLOOR represents next generation manufacturing techniques, utilizing the recently developed rigid composite coreboard (RCB). RCB core is manufactured from inert mineral compounds that are stable and provide little or no movement; this enables excellent performance characteristics not commonly associated within the Luxury Vinyl Tile Category.

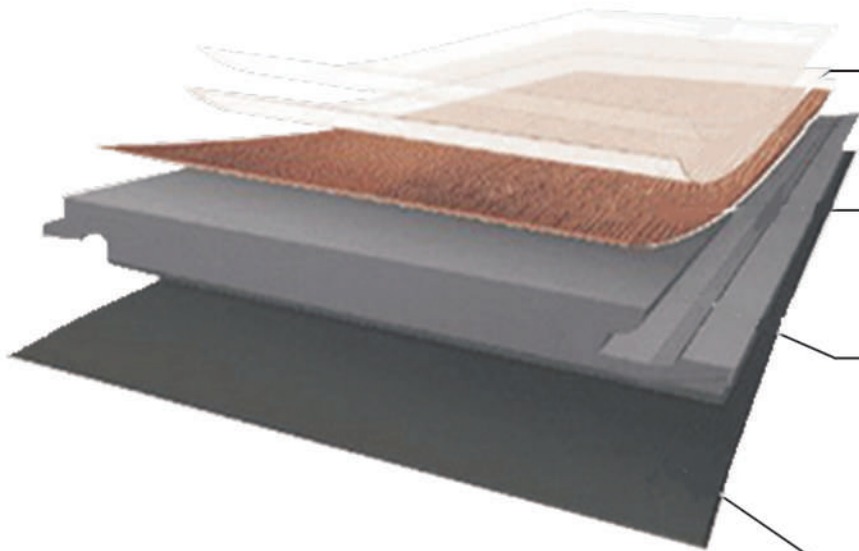
The plank construction also incorporates a robust water based UV coating for everyday scuff resistance. HYDRO-STEP SPC FLOOR's 0.5mm commercial wear layer and printed visual decor provides realistic timber textures and colours in both classic Australian timber species and a contemporary colour palette. Each plank incorporates a stabilizing balance layer on the underside with an attached acoustic cross-linked IXPE foam layer that delivers excellent noise reduction performance. Even suitable for high rise constructions.

This next generation Hybrid flooring is dimensionally stable, highly durable and suitable for interior waterproof installations providing instant appeal for modern housing, light commercial and retail shop fit out.

SEA SHELLS



# BOARD CONSTRUCTION



## Commercial Grade Wear Layer

- \* protect against excessive wear
- \* provides superior cleanability
- \* provides superior stain resistance
- \* rated for commercial traffic

## High Definition Design Layer

- \* durable, resilient
- \* resists chips & dents
- \* virgin vinyl

## Core Structure

- \* limestone/PVC composite core
- \* stable - will not expand or contract under normal conditions
- \* glueless click system
- \* 5G Easy Install Click System

## Attached Acoustic Underlay

- \* provides added sound insulation
- \* no need for separate underlayment
- \* naturally resists moulds
- \* absorbs minor subfloor imperfections



BRUSHED OAK





**BLACKBUTT** is an Australian grown hardwood.  
Attractive visual aspect and colourings.  
Super attractive with warmth and character.





# DISCOVER A WORLD YOU'D LOVE TO LIVE IN.

We believe that dreaming is as important as doing. That's what makes our HYBRID SPC Floors so special. While we're pioneers in the way today's HYBRID SPC Floors are made, it's not just about quality manufacturing Or innovative details. It's about what our floors can do for Your personal interior style.

HICKORY





WHITE WASH

## TECHNICAL SPECIFICATIONS

\*Plank Size: L1540 x W228 x T6.5mm (1.5mm IXPE Acoustic Pad)

\*Wear Layer :0.5mm (Commercial rated)

\*Packing : 6PCS/CTN=2.10672SQM

\*Valinge 2G Click System



Attached 1.5mm IXPE Acoustic sound pad to enhance walking comfort and minimize sound transmission.



Interior waterproof ,can be installed in wet areas including bathrooms and laundry.



Unbeatable Locking Strength with easy floating install.



Easy maintenance with a wet mop ,brush ,vacuum cleaner or standard cleaning products.



Eco-Friendly.



High impact resistance wear layer.



25 year Limited Warranty for Residential and 5 year Limited Warranty for Commercial.



DESERT SANDS

Size: L1540 x W228 x T6.5mm (1.5mm IXPE Acoustic Pad attached)





NSW SPOTTED GUM



Pearl White

Size: L1540 x W228 x T6.5mm (1.5mm IXPE Acoustic Pad attached)

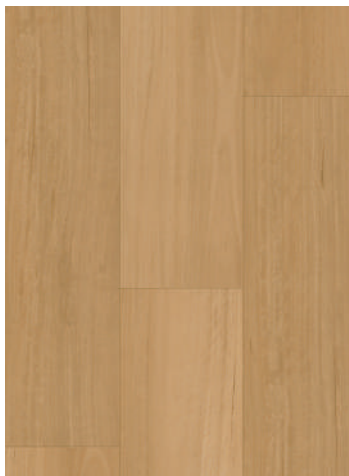


## HYDRO-STEP SPC FLOOR DESIGNS



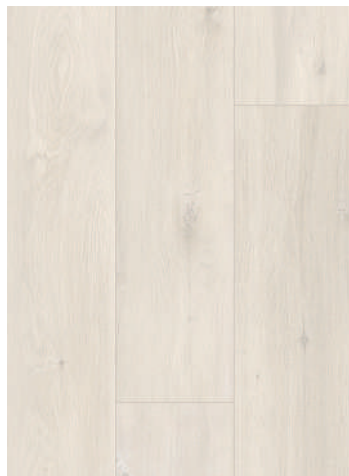
SEA SHELLS

size:1540\*228\*6.5mm



BLACKBUTT

size:1540\*228\*6.5mm



WHITE WASH

size:1540\*228\*6.5mm



NSW SPOTTED GUM

size:1540\*228\*6.5mm



HICKORY

size:1540\*228\*6.5mm



DESERT SANDS

size:1540\*228\*6.5mm



BRUSHED OAK

size:1540\*228\*6.5mm



PEARL WHITE

size:1540\*228\*6.5mm



**100%**

WATER PROOF

PERFECT

ANY SETTING







## ***HYBRID ACCESSORIES***

HYDRO-STEP SPC FLOOR Colour matched Flush Stair Nosing, Scotia and T-molding are available to support a range of install applications. For all other trim accessories, please check for availability.



FLUSH STAIR NOSING



T-MOLDING



SCOTIA



# INSTALLATION AND MAINTENANCE GUIDELINES

## Preparations

the surface of the floor must be clean, dry and stable.  
Any polish, dirt, paint, etc must be removed from the job surface.  
The floor surface must be flat and leveled with a scraper and putty knife  
Maintain the room temperature above 15°C(59°F) before installation  
Check that the doors can still open and close after the floor has been installed(minimum+1cm(3/8"))

## Installation

Ensure that all installing products must be the same lot numbers  
Position the plank to be installed at an angle of 15° to 20° to the plank already installed.  
Move the plank gently up and down and at the same time exert forward pressure.  
The planks will automatically click into place  
You can either insert the tongue into the groove, or the groove into the tongue.  
The tongue in groove method is the most common and the easiest way.  
Please refer to the installation diagrams for more details.

## Care

- \*Lay dirt-absorbing mats in high traffic areas, such as entrance and hall ways.
- \*Fit felt tips on the feet of your furniture.
- \*For office chairs, use a chair mat to protect the floors.

## Site Condition

- Existing floor surface must be within acceptable deviation level of 3mm in 1.5m radius as per Australia flooring Standard. This will avoid floor board separation .
- It is advisable to apply self leveling cement before laying vinyl plank for uneven floor.
- Uneven wall surface will cause a gap between vinyl and wall, it is advisable to skim coat the gap when floor completed. This can be substituted with wall skirting.
- If floor skirting is excluded, it is advisable for vinyl plank to be installed first before any wall pane /partition/furniture lay to avoid visible gap between wall and vinyl plank. In this installation, floor cover is compulsory to protect the completed vinyl flooring.
- If floor skirting is included, it is advisable for vinyl plank to be installed last to avoid damage to the vinyl flooring.
- Allow expansion gap 10mm between wall and floor board. Floor width over 6m, it requires intermediate expansion gap and gap cover.
- The suitable site temperature to be between 18-28 degree of Celsius, otherwise floor plank requires to acclimatise on site prior until meet this condition.

## Maintenance

- Cleaning:
- \*Sweep your floor regularly to remove loose dirt
  - \*Prevent stains by wiping spills promptly.
  - \*Occasional mopping with warm water and Distilled White vinegar is recommended when Dirt builds up and sweeping alone is not sufficient. Use a solution of 1/2 cup Distilled white vinegar in one gallon of warm water.
  - \*Do not attempt to clean your products with wax, polish or scouring materials.

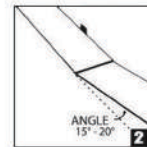
## WARRANTY

We offer 25 year Limited Warranty for Residential and 5 year Limited Warranty for Commercial. We warrant to the original purchaser from the original date of purchase of product from a distributor, business partner or authorized dealer that it's products in original state, will be free from defects in material, fabrication, laminating, assembly, separation of the structure, matching size and classification. We warrant, to the original purchaser, that the flooring's surface layer will not wear through, fade or stain for the period indicated on the package. The warranty does not apply if the damages are caused by improper installation according to the installation instructions, improper surface preparation, improper handling and improper maintenance. Wear, Stain, fade warranty is not covered by sun and/or artificial, chemical, improper forces etc  
We also guarantee, to the original purchaser, that the surface layer will not separate from the core, for the period indicated on the package when used under normal circumstances.  
For any warranty issues, please refer to the original point of purchase with your sales receipt. Installation implies acceptance. No warranty will be offered for visual defects once installed. In the event a claim is accepted, we reserve the right to repair or replace the damaged area of the floor. We will assume material cost only and in the case where the product is no longer available, we reserve the right to replace with an equivalent value product available.  
This warranty is pro-rated based on the amount of time the flooring has been installed.

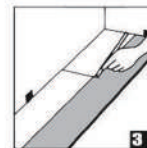
## Installation / Instructions



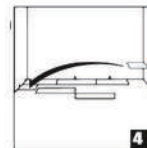
Start at a corner.  
Place first plank with tongue side facing wall.  
Use spacers to maintain an expansion space of 10mm between wall and flooring.



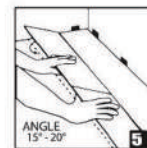
Insert 2nd plank's end groove at an angle of 15° to 20°. The plank will click into place when lowered.  
Line up edges carefully.  
Planks should be flat to the floor.



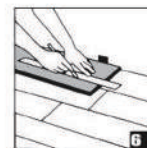
For the last plank of a row, flip a full plank to its under side and place beside the row.  
Measure and mark the required length.  
Use a ruler and utility knife to score the plank and snap off. Insert as previous diagram.



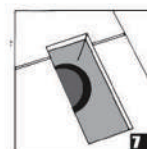
Begin next row with the last cut off piece from the previous row to stagger the pattern.



To start second row, assemble your entire row on the subfloor before attaching it to the first row.  
To attach, tilt and push the side tongue into the side groove of the first row at an angle of 15° to 20°. Lower and click into place lining the edges up carefully.  
Continue laying remaining planks in this manner.



To fit the final row, lay a plank upside down in the flooring as per diagram with the tongue side close to the wall. Take another plank and place it right on top of the previous row and use it as a ruler.  
Don't forget to allow room for spacers.  
Cut the plank and attach into position.



Heating vents require expansion room.  
First, cut plank to the correct length.  
Place the cut planks at its actual position and use a ruler to measure the areas to be cut out and mark them.  
Cut out the marked points allowing the necessary expansion distance.



The gap between the bottom of a door and the vinyl flooring should be 1 cm height. To trim door frames, turn a plank upside down. Place it next to the door frame as per diagram. Use a handsaw and cut away the necessary height so that the planks can slide easily underneath the frame.

**\*PLEASE READ ALL INSTRUCTIONS CAREFULLY BEFORE YOU BEGIN INSTALLATION. IMPROPER INSTALLATION WILL VOID WARRANTY**



*We pride ourselves in only supplying quality products, issued by our reputable suppliers with whom we have had strong relationships with for many years. Whether you're renovating, redecorating or building a new home or Commercial project, we have a huge range of products to suit most needs and budgets. We make it easy to choose and offer samples to enable you to decide on the perfect match for your home. With expert and full-time, standard operating hour support, we are always contactable by phone, e-mail or web-chat - please feel free to contact us in whichever way that best suits you.*



**HARMONY**  
TIMBER FLOORS